



CITY OF
Lincoln
COUNCIL

City Centre Issues – an Intervention Framework

Simon Walters, DCE

Together, let's deliver
Lincoln's ambitious future



Vision and objectives

VISION:

No incidence of begging, rough sleeping, illegal drug taking or drunken behaviour in the Public Space Protection Area (and adjacent areas)



Together, let's deliver
Lincoln's ambitious future



www.lincoln.gov.uk

Vision and objectives

OBJECTIVES

Maintain public safety and reduce the risk of further victims in the city centre

- Reduce further harm (including risk of death) to those living with alcohol/drug addictions or are begging on the streets of Lincoln city centre
- Reduce the potential for those living with addictions or begging or sleeping rough from being exploited
- Ensure partners actions are as co-ordinated, streamlined, and joined up as possible
- Maintain the positive reputation of the city as a regional shopping and visitor destination and so support the local economy to expand



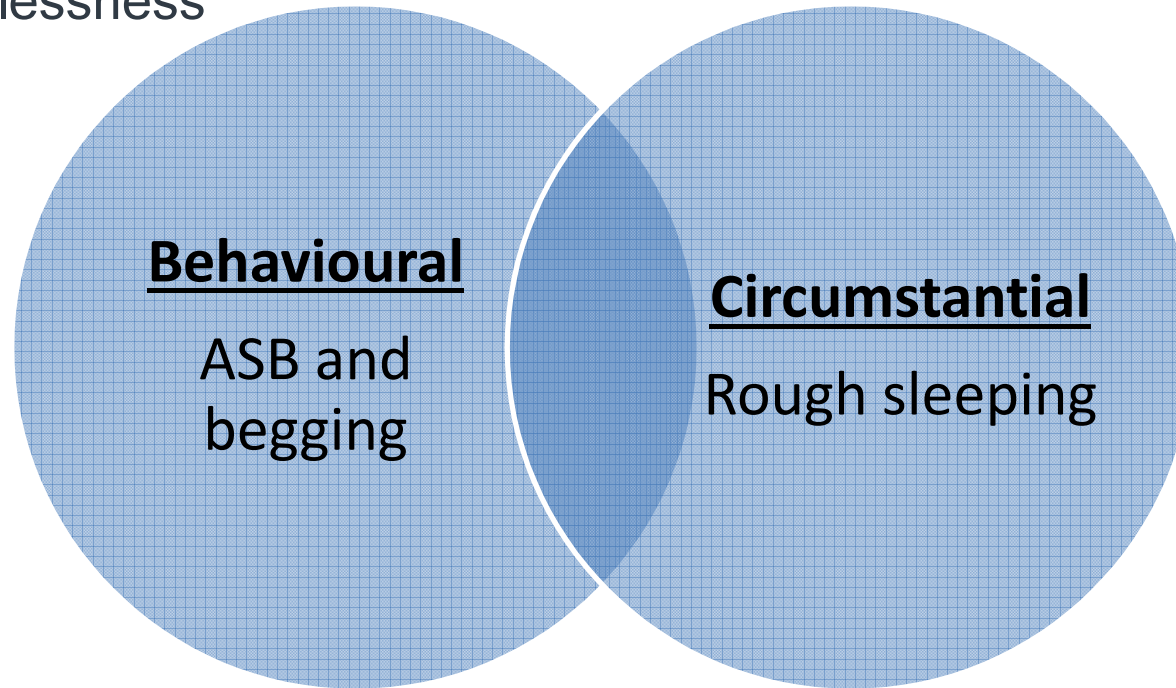
Together, let's deliver
Lincoln's ambitious future



www.lincoln.gov.uk

Two inter- related issues

The overall programme aims to tackle Begging and addiction fuelled ASB, although the Venn diagram below shows that there is an overlap with homelessness



Not all “homeless” people begging on the streets are actually homeless
Not all rough sleepers are causing ASB or criminal behaviour

The Strategy Group

The Strategic Group brought together in 2017 includes partners from:

- Active Faith
- City of Lincoln Council
- Clinical Commissioning Group
- Lincoln Business Improvement Group
- Lincolnshire County Council
- Lincolnshire Partnership Foundation Trust
- Member of Parliament for Lincoln
- Police
- Police and Crime Commissioner
- Public Health



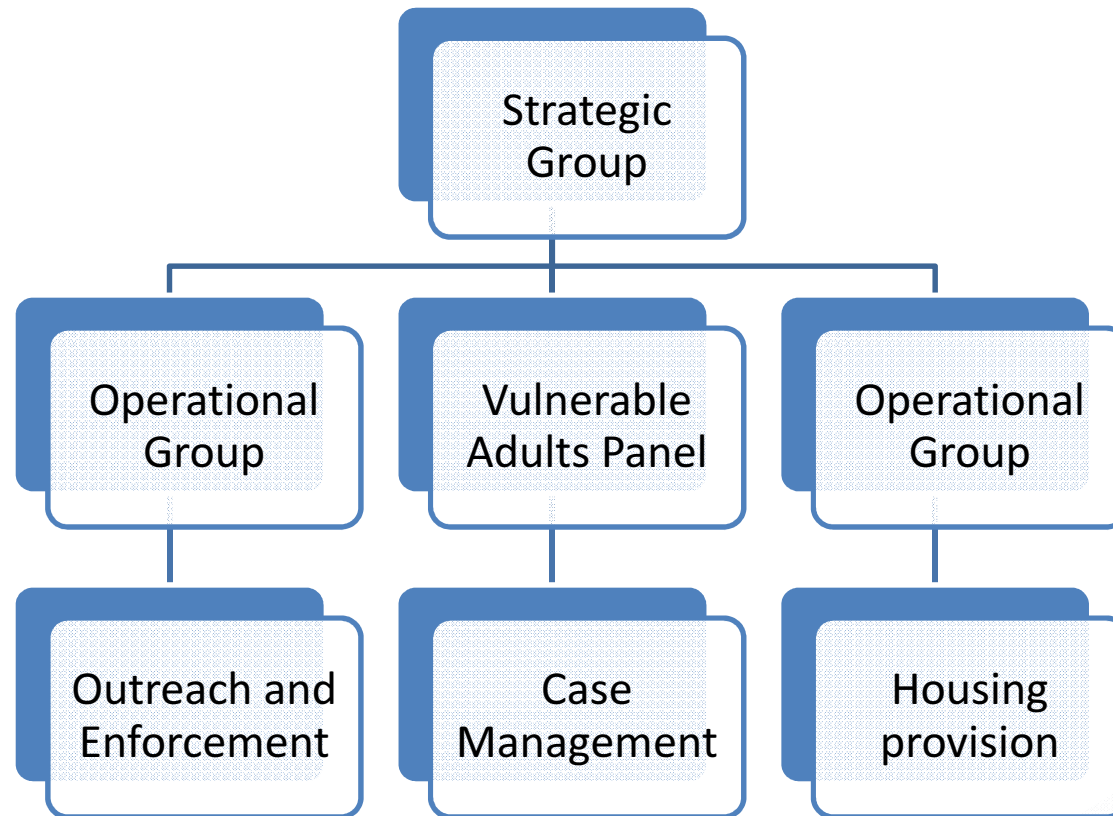
Together, let's deliver
Lincoln's ambitious future



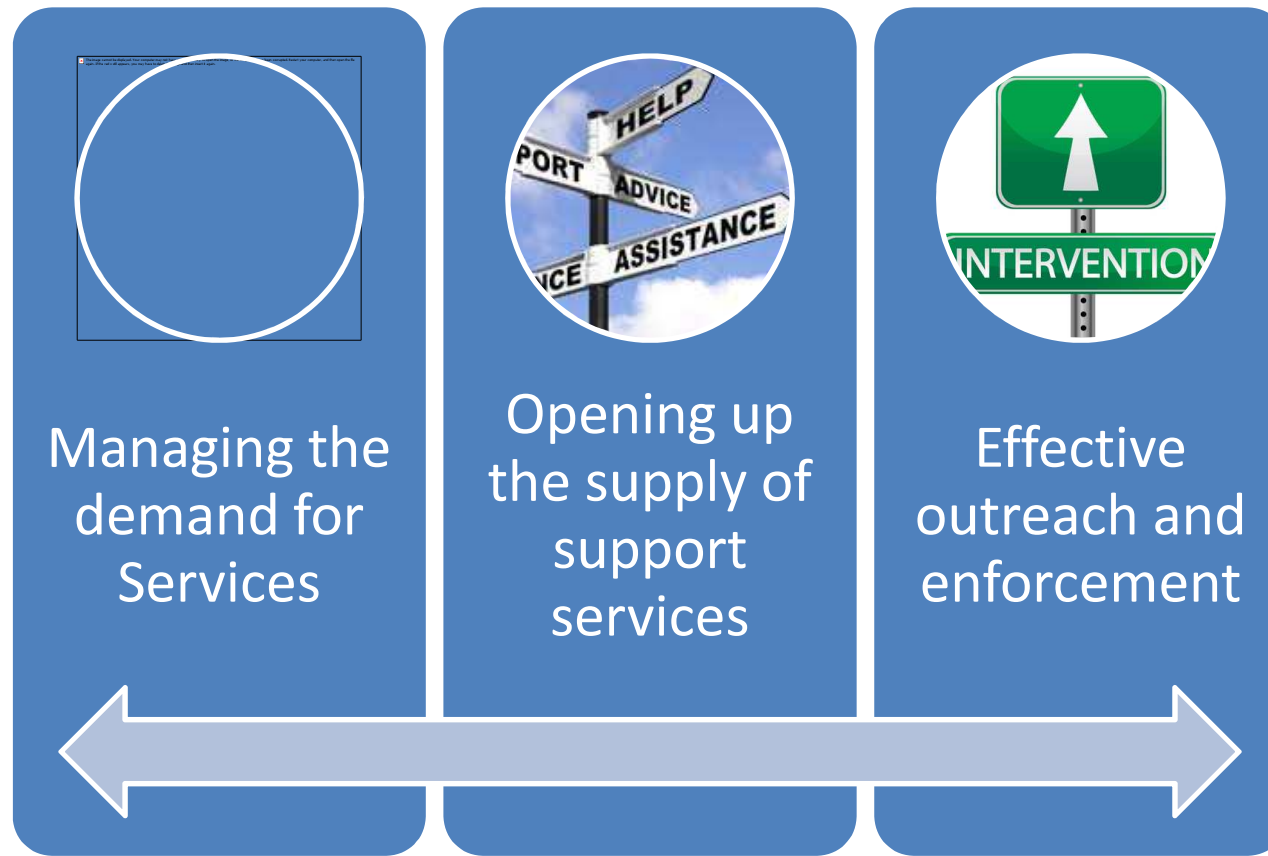
www.lincoln.gov.uk

The Strategy Group

The governance arrangements are:



There are three strands of activity



Managing the demand for services



Focus to be placed on:

- Understand where demand is coming from and reduce it- be it rough sleepers or beggars/ vulnerable addicts converging on the city centre

For rough sleepers:

- Reconnect them with their home town/city quickly or if from Lincoln - into support
- Work with partners to increase day time provision

For begging and addition fuelled ASB:

- Launch a diverted giving scheme
- Work with police to tackle presence of drugs in city centre



Together, let's deliver
Lincoln's ambitious future



www.lincoln.gov.uk

Opening up the supply of support services



Focus to be placed on opening out access to support - exploring ways for vulnerable people to access the support they need by:

- Work with the Social Impact Bond (Action Lincs) to ensure rough sleepers are in support
- Development of a Vulnerable Adults Panel
- Seek funding to commission drug, alcohol and mental health outreach work
- Ensure the pathway into support is speeded up
- Undertake “buddying” work to help individuals engage properly with the agencies there to help



Effective Outreach and Enforcement



Focus to be placed on encouraging vulnerable persons into support. But as a last resort... enforcement will focus on behaviour that demonstrates criminality and harm to the community.

- Communications campaign to launch the overall strategy
- Exploring the delegation of police powers
- Creation of a multi- agency City Centre team starting with the co-location of the PPASB and Police teams at City Hall
- Utilisation of the new CCTV system to target resources
- Co-ordinated “outreach and enforcement” days of action
- Engage with magistrates association to support the use of positive requirements during sentencing



Together, let's deliver
Lincoln's ambitious future



www.lincoln.gov.uk

Rough Sleeping Grant from MHC&LG

In addition, we have received just under £377,000 to be spent before the end of March 2019 and have been invited to bid for further funding for 2019/2020

In summary we have received funding for :

- A Rough Sleeper Co-Ordinator and 2 specialist Housing Options Officers (CoLC)
- An additional Outreach Worker (P3) and a specialist Addiction and Mental Health Worker to work alongside the Outreach Team
- Additional funding for the YMCA to extend the opening hours of the night-shelter
- Recommissioning of the Cornerhouse project for rough sleepers with complex needs

The focus is to prevent the flow of rough sleepers into Lincoln, reconnection, emergency accommodation, specialist outreach support, specialist supported accommodation and prevention of future rough sleeping



Together, let's deliver
Lincoln's ambitious future



www.lincoln.gov.uk

Our four strategic priorities

Let's drive
economic
growth

Let's reduce
inequality

Let's deliver
quality
housing

Let's enhance
our remarkable
place



Together, let's deliver
Lincoln's ambitious future



www.lincoln.gov.uk